

# KARIBAN

**REFERENCE :** K276

**SIZES :** S\_M\_L\_XL\_XXL\_3XL\_4XL\_5XL

**COMPOSITION :**

Main fabric : Polyester / Combed cotton pique 65/35 - 200 65% polyester / 35%cotton

**WEIGHT :**

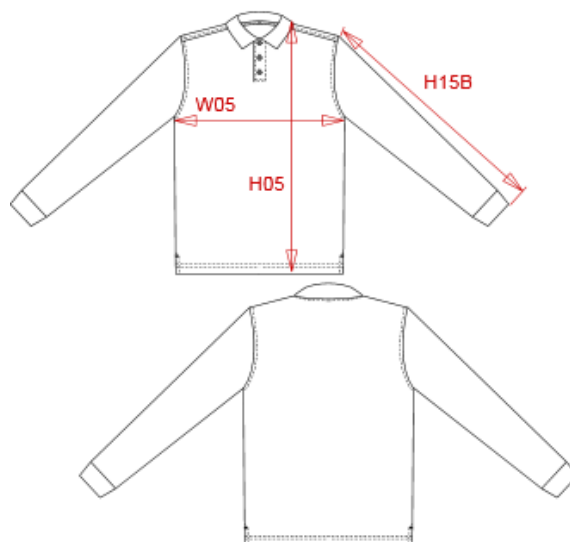
Main fabric : 200 gsm

**TECHNICAL DETAIL :**

Anti-pilling & anti-bacterial

**ARTICLE WEIGHT :**

300 gr/pc



DESCRIPTION
<b>Français :</b> Polo manches longues homme
<b>English :</b> Men's long-sleeved polo shirt
<b>Nederlands :</b> Polo lange mouwen
<b>Deutsch :</b> Polo hemd mit langen Ärmeln
<b>Español :</b> Polo manga larga
<b>Italiano :</b> Polo maniche lunghe
<b>Português :</b> Polo de manga comprida

COLORS	PANTONE SERIGRAPHIE
White	White
Black	Black
Navy	433C
Dark grey	447C
Oxford grey	Based on Cool gray 7C

MEASUREMENT										
Description	S	M	L	XL	XXL	3XL	4XL	5XL		
<b>W05 (M)</b> 1/2 largeur poitrine à 1.5cm de l'emmanchure / 1/2 chest width at 1.5cm below armhole	50	53	56	59	62	65	68	71		
<b>H05 (M)</b> Hauteur totale / Total height	70	72	74	76	78	80	82	84		
<b>H15I (M)</b> Longueur manche avec bord côte / Sleeve length with rib	63,50	64,50	65,50	66,50	67,50	68,50	69,50	70,50		

CARE LABEL				

PACKING	
Box	30 pcs / box S => L:60cm W:40cm H:24cm GW:9.78kg NW:8.78kg M => L:60cm W:40cm H:24cm GW:10.2kg NW:9.2kg L => L:60cm W:40cm H:24cm GW:10.7kg NW:9.7kg XL => L:60cm W:40cm H:24cm GW:11.2kg NW:10.2kg XXL => L:60cm W:40cm H:24cm GW:11.74kg NW:10.74kg 3XL => L:60cm W:40cm H:24cm GW:12.38kg NW:11.38kg 4XL => L:60cm W:40cm H:24cm GW:12.87kg NW:11.87kg 5XL => L:60cm W:40cm H:24cm GW:13.49kg NW:12.49kg